

#1711



2 Pc.

6" (15 CM) STANDARD TRACK BUNGEE

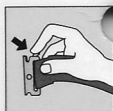
- Convenient solution to hold down a variety of tools and equipment
- Ideal for providing added support for long and bulky items
- Heavy duty bungee material for strength and flexibility

#1711

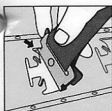


6" (15 CM) STANDARD TRACK BUNGEE

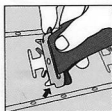
CONNECTING X-TRACK® / E-TRACK ACCESSORY



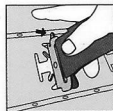
STEP 1:
Press back
locking lever.



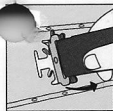
STEP 2:
With locking lever
pressed back,
insert lever end
into X-Track® /
E-Track slot.



STEP 3:
Insert other end
into X-Track® /
E-Track slot.

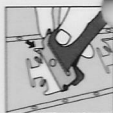


STEP 4:
Release
locking lever.

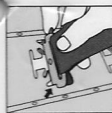


STEP 5:
Pull on
attachment to
ensure that it has
locked securely.

DISCONNECTING X-TRACK® / E-TRACK ACCESSORY



STEP 1:
Press locking
lever and push
toward locking
lever end of slot.



STEP 2:
Lift accessory out
of slot at angle
to remove.

WARNING: READ AND OBSERVE ALL WARNINGS AND CAPACITY LIMITATIONS BEFORE USING THIS PRODUCT. FAILURE TO COMPLY WITH THIS WARNING AND THE CAPACITY LIMITATIONS MAY RESULT IN SERIOUS PERSONAL INJURY AND/OR SIGNIFICANT PROPERTY DAMAGE. THE ATTACHMENT/INSTALLATION OF THIS PRODUCT IS CRITICAL TO ITS LOAD CARRYING CAPABILITIES AND IS BEYOND THE CONTROL OF WINSTON PRODUCTS, LLC. IT IS THE RESPONSIBILITY OF THE USER TO UNDERSTAND THESE WARNINGS AND TO PROPERLY ATTACH/INSTALL THIS PRODUCT. IF THE USER IS UNABLE TO UNDERSTAND THESE WARNINGS AND/OR IF THE USER HAS LIMITED MECHANICAL EXPERIENCE OR ABILITY, THE USER SHOULD HAVE THE PRODUCT ATTACHED/INSTALLED BY A PROFESSIONAL INSTALLER SUCH AS A QUALIFIED GARAGE OR AUTO BODY SHOP. WINSTON PRODUCTS, LLC IS NOT LIABLE FOR DAMAGES AND/OR INJURIES THAT ARE THE RESULT OF IMPROPER ATTACHMENT/INSTALLATION OR IMPROPER USE. AT NO TIME SHOULD THE MAXIMUM RATED CAPACITY OF ANY COMPONENT IN THE SYSTEM BE EXCEEDED.

WARNING: THIS PRODUCT IS NOT TO BE USED AS AN ANCHOR POINT OR A TIE DOWN.

WARNING: CANCER AND REPRODUCTIVE HARM -
WWW.P65WARNINGS.CA.GOV

A WINSTON PRODUCTS COMPANY
CARGOSMARTLLC.COM

WINSTON PRODUCTS, LLC
30339 DIAMOND PARKWAY
CLEVELAND, OH 44139

ENGINEERED IN THE USA | MADE IN CHINA



07 18

002-0418