

THE MANITOGA / MUSCOOT  
DISTRICTS'

SCOUTS BSA  
KLONDIKE DERBY 2024



Join us for a fun filled day of Scouting Skills,  
Teamwork, Competition, and, back by popular  
demand -  
SLED RACE! & More!

DURLAND SCOUT RESERVATION  
JANUARY 13, 2024

\$12 per scout (\$15 per scout starting 9/4/2024)

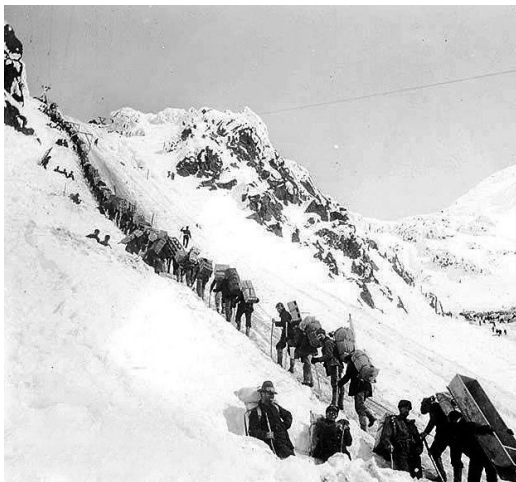
Registration closes 1/10/2024. NO WALK-INS

Details and Online Registration: [mycouncil.ghvbsa.org/event/7351](https://mycouncil.ghvbsa.org/event/7351)

## The Klondike Gold Rush

On August 16, 1896, an American prospector named George Carmack and two Tagish men, Keish and Káa Goox, discovered gold in Rabbit Creek, a tributary of the Klondike River in the Yukon Territory of Canada. Word spread, and soon miners from the surrounding camps headed for the Yukon river valley, many by dog sled. Winter did not deter these miners, but the frozen rivers prevented their leaving for the US West Coast until the following June, when the first of the gold-laden ships arrived in San Francisco. On June 14, 1897, the press reported that a total of \$1,139,000 (equivalent to \$1 billion at 2010 prices) had been brought in by these ships, although this was probably an underestimate.

Thus the Klondike Gold Rush stampede began. At its height, from June 1897 through the summer of 1898, an estimated 100,000 people headed for the Klondike region, although only 30,000 to 40,000 actually made it to the mining camps. The prospectors carried their equipment, which could weigh a ton, in stages, either on prospector backpacks (as you may remember from previous Klondike Derbies) or on dog sleds. Most made their way to Skagway and then up either the Chilkoot or White Passes, from where they could then sail down to the Klondike River.



Two views of the Chilkoot Pass

Due to the difficulty of getting over the passes, along with the mountainous terrain and frigid conditions, most of the 40,000 who actually made it to the camps did not arrive until the summer of 1898. By that time, most of the mining opportunities had disappeared.

Getting provisions to the stores at the mining camps and boom towns that had sprung up was very difficult, and as such, basic provisions were extremely expensive. A dozen eggs would cost \$90 in today's money. A bushel of potatoes which would cost 85 cents in New York at the time would cost \$25 up in the Klondike. Ever hear of Yukon Gold potatoes? Clearly, the people who got rich were not the prospectors, but the shop keepers.

This is the historical foundation for the Klondike Derby, first run by BSA troops in 1949, with which you are nowadays so familiar. Every winter, you follow in the footsteps of those brave people who risked it all for their chance at fortune. So load up your sleds and head for the gold!

# Klondike Stations

## **#1: Fire Building**

Prospectors don't have time for playing around with burning strings. They want to warm up so that they can get back to their panning and sluicing. Build a fire and heat up a cup of water to make tea or broth. Extra points are given for not using matches or a lighter. No accelerants may be used (gas, lighter fluid, etc.) You may bring your own tinder, matches, etc.

## **#2: Navigation-Find North/Map Reading**

You must interpret a topographic map in order to find the legendary lost mine of Prickly Pete. You must also locate North without the aid of a compass.

## **#3: Prospector Cookoff**

When you're snowed in by ten-foot snow drifts in the middle of winter, fresh vegetables and fruits are a non-starter up in the Yukon. You have the items that are listed on "A Yukon Outfit." You must make a meal using at least four of the items on the list (not counting salt and pepper.) Read through the list carefully so that you don't miss any possible ingredients. You may substitute jerky for the bacon.

## **#4: Bear Bag Hanging**

There's bars out thar! Your patrol must hang a 10 lb. bear bag using appropriate guidelines.

## **#5: Wilderness Survival**

A sudden snowstorm has snowed you in as you were heading back from your mine far from camp. Your patrol will be using forest items to construct a shelter in which one of your patrol will fit. You may use your blanket and rope if necessary.

## **#6: Snow Shoe Relay**

Your patrol will take turns navigating an obstacle course on snowshoes.

## **#7: Tree I.D./Height Measurement**

Winter's coming, and you don't want to spend it in a Camp Read-type canvas tent. You'll want to build a cabin and you'll be needing logs. Identify three different tall trees (they may be leafless, so it'll be tricky.) Then determine the height of each.

## **#8: First Aid**

A sled and rider have rolled down the Chilkoot Pass. Both are busted up real good. Treat the prospector and then evacuate him. Leave the sled.

## **#9: Snow Snakes!**

Compete in the traditional Native American winter sport of many of the Great Lakes people, including the Six Nations, the Sioux, the Wyandotte and the Ojibwe. Event is snow-dependent.

Because the nearest boom town could be 600 miles away from a mining camp, the Northwest Mounted Police required that each stamper bring a year's worth of supplies into Canada with them. The official NMP list (from 1897) of required provisions is shown below:

## A YUKON OUTFIT.

8 Sacks Flour	1 Hand Saw
150 lbs. Bacon	1 Jack Plane
150 lbs. Split Peas	1 Brace
100 lbs. Beans	4 Bits, assorted, 3/16 to 1 in.
25 lbs. Evaporated Apples	1 8-in. Mill File
25 lbs. Evaporated Peaches	1 6-in. Mill File
25 lbs. Apricots	1 Broad Hatchet
25 lbs. Butter	1 2-qt. Galv'd Coffee Pot
100 lbs. Granulated Sugar	1 Fry Pan
1 1/2 doz. Condensed Milk	1 Package Rivets
15 lbs. Coffee	1 Draw Knife
10 lbs. Tea	3 Cov'd Pails, 4, 6, 8-qt. Granite
1 lb. Pepper	1 Pie Plate
10 lbs. Salt	1 Knife and Fork
8 lbs. Baking Powder	1 Granite Cup
40 lbs. Rolled Oats or Oatmeal	1 each Tea and Table Spoon
2 doz. Yeast Cakes	1 14-in. Granite Spoon
1/2 doz. 4 oz. Beef Extract	1 Tape Measure
5 bars Castile Soap	1 1 1/2-in. Chisel
6 bars Tar Soap	10 lbs. Oakum
1 tin Matches	10 lbs. Pitch
1 gal. Vinegar	5 lbs. 20d. Nails
1 box Candles	5 lbs. 10d. Nails
25 lbs. Evaporated Potatoes	6 lbs. 6d. Nails
25 lbs. Rice	200 feet 5/8-in. Rope.
25 Canvas Sacks	1 Single Block
1 Wash Basin	1 Solder Outfit
1 Medicine Chest	1 Pair Rowlocks
1 Rubber Sheet	1 14-qt. Galvanized Pail
1 set Pack Straps	1 Granite Saucepan
1 Pick	3 lbs. Candle Wick
1 Handle	1 Compass
1 Drift Pick	1 Candle Stick
1 Handle	6 Towels
1 Shovel	1 Axe Handle
1 Gold Pan	1 Axe Stone
1 Axe	1 Emery Stone
1 Whip Saw	

Some of the foregoing articles are omitted by some miners.  
Dealers will advise in all cases.

## **PATROL EQUIPMENT NEEDED**

Klondike Sled – If your patrol needs a sled, see the Resources on the sign-up page for plans. Some are classic, some are modern, some are complex, some are simple.

Ingredients for Cook-off

Propane tank for cook-off

Cookware and utensils for cook-off

Blanket

~100' of rope for winter survival and bear bag

Staves for first aid stretcher

Fire starter kit

Patrol First Aid kit

Compass

## **PERSONAL EQUIPMENT NEEDED**

Daypack w/ the 10 Scout Essentials

A hot drink in a Thermos

Lunch

Neckerchief

Scout Handbook

## **OTHER NOTES**

Each patrol member is responsible for their own warmth and safety. Please dress warmly for the event!

All staff for the event should bring a lunch and hot beverage(s)

Each Troop is being asked to send at least 1 leader to help run a station.



## WINTER KLONDIKE – JANUARY 13, 2024

### **Durland Scout Camp**

<b>7:30 AM</b>	Arrival for check-in, sled/patrol inspection and instructions
<b>7:50 AM</b>	Opening Ceremony, then patrols go to their 1 <sup>st</sup> station
<b>8:00 AM – 8:30 AM</b>	1 <sup>st</sup> Station
<b>8:35 AM – 9:05 AM</b>	2 <sup>nd</sup> Station
<b>9:10 AM – 9:40 AM</b>	3 <sup>rd</sup> Station
<b>9:45 AM – 10:15 AM</b>	4 <sup>th</sup> Station
<b>10:20 AM – 10:50 AM</b>	5 <sup>th</sup> Station
<b>10:55 AM – 11:25 AM</b>	6 <sup>th</sup> Station
<b>11:30 PM – 12:00 PM</b>	LUNCH BREAK
<b>12:05 PM – 12:35 PM</b>	7 <sup>th</sup> Station
<b>12:40 PM – 1:10 PM</b>	8 <sup>th</sup> Station
<b>1:15 PM – 1:45 PM</b>	9 <sup>th</sup> Station
<b>1:50 PM – 2:00 PM</b>	Patrols turn in their score sheets
<b>2:00</b>	SLED RACE!

**COMPETITION RESULTS WILL BE ANNOUNCED AT  
THE FEBRUARY ROUNDTABLE!**